



Version 3 – Feature List

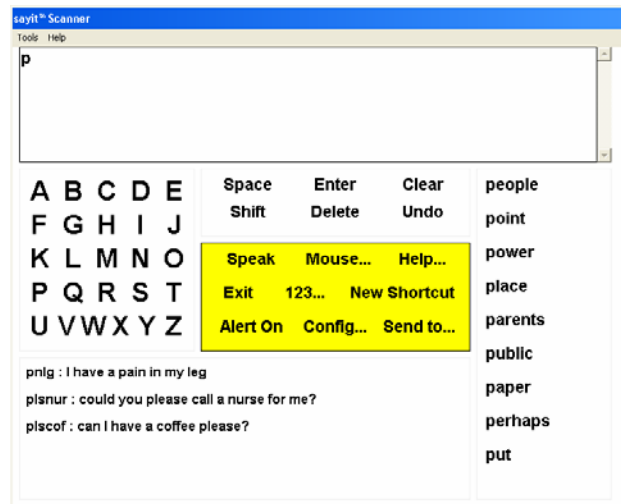
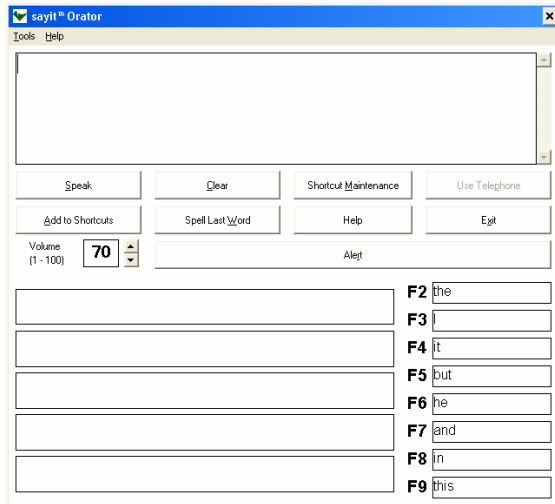
We are proud to announce the release of sayit version 3. Built on the solid foundations of previous versions and incorporating feedback provided by users, carers, associations and support groups sayit is now more than ever tailored to the communication needs of people with speech and mobility issues. This document introduces changes from version 2 for sayit Orator and sayit Scanner and Mouse.

Table of Contents

| | |
|---|---|
| HIGH CONTRAST INTERFACE | 2 |
| TWO DIFFERENT SCREEN LAYOUTS – ALPHABETICAL AND OPTIMISED | 2 |
| WORD PREDICTION..... | 2 |
| NEW EFFICIENT SCAN TECHNIQUE | 3 |
| NEW EFFICIENT MOUSE CONTROL TECHNIQUE | 4 |
| THREE INPUT METHODS..... | 5 |
| <i>Point and click mode</i> | 5 |
| <i>Keyboard enablement</i> | 5 |
| DEVICE COMPATIBILITY..... | 6 |
| IMPROVED SEND TO FUNCTIONALITY | 6 |
| IMPROVED STABILITY | 6 |
| SMART WORD COMPLETION..... | 6 |
| INCREASED VOCABULARY..... | 6 |
| LEARNING CAPABILITY | 6 |
| HIGH QUALITY VOICES..... | 6 |
| EXTRA SHORTCUT OPTIONS..... | 6 |
| EXTRA VOCABULARY MATCH OPTIONS..... | 6 |

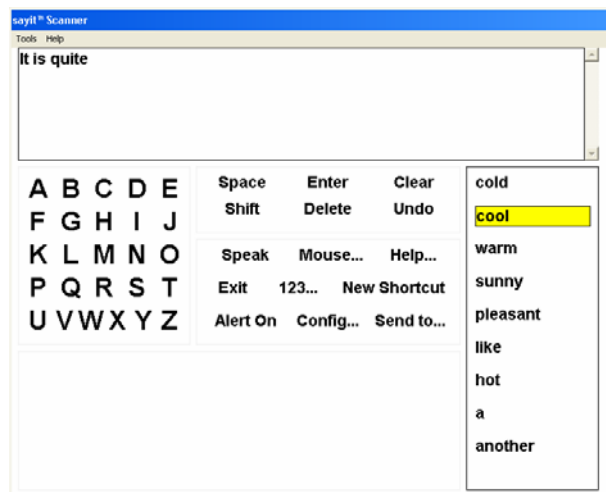
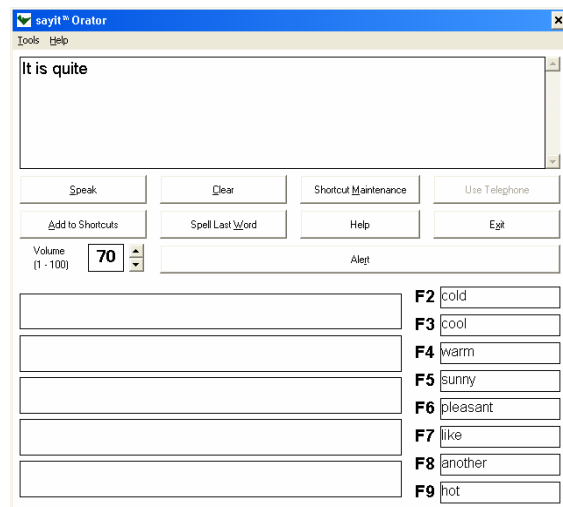
High contrast interface

Some of our users stated that they found it difficult to identify components on the screen as such we have designed version 3 with a high contrast interface (black text, white foreground and bright yellow highlighting) increasing the visibility of the sayit screen.



Word prediction

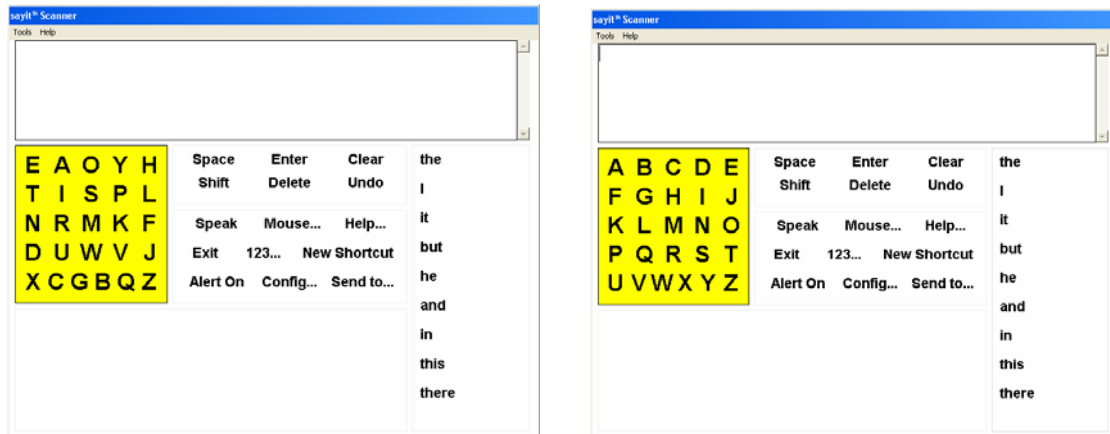
As a direct response to feedback both Orator and Scanner now have full word prediction, this makes sayit appropriate for sufferers of Aphasia and similar ailments where prompting for a starting or following word may assist text authoring.



Configurable letter scanning layout – alphabetical and optimised

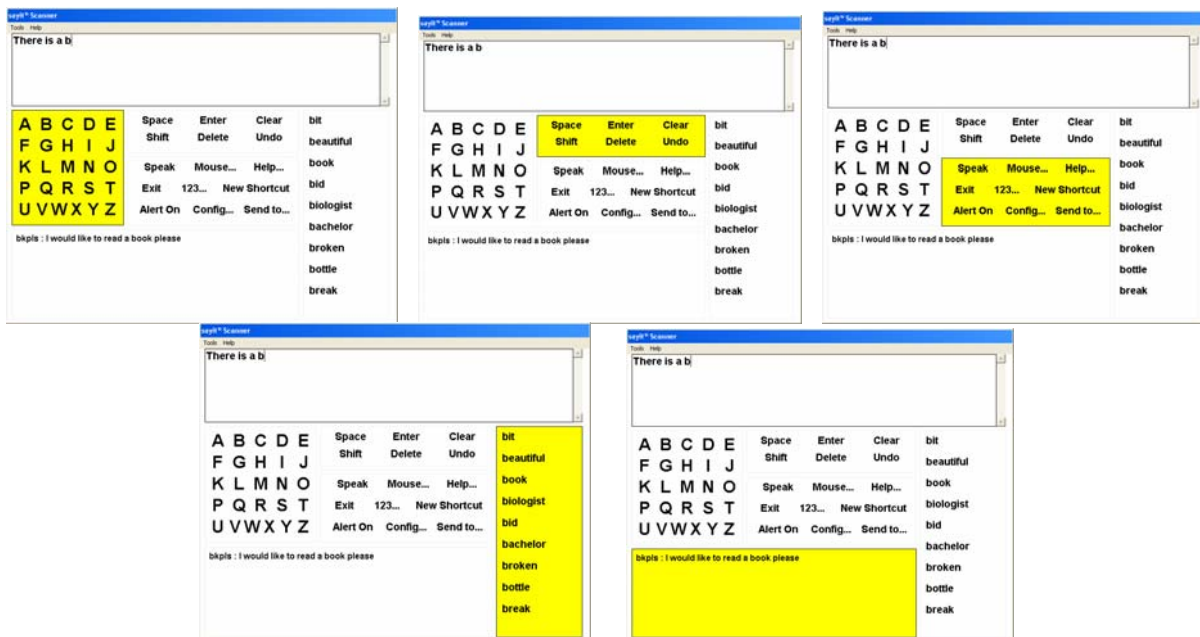
sayit Scanner and Mouse now has the choice of two letter layouts. Sayit Scanner maintains the traditional alphabetical layout and adds an optimised frequency of use layout. Based on published research in usage frequency, we have arranged the letters in the optimised layout to have the most common letters require the least number of clicks to generate.

This reduces the amount of time it takes to select a letter and reduces the overall time taken to produce text.

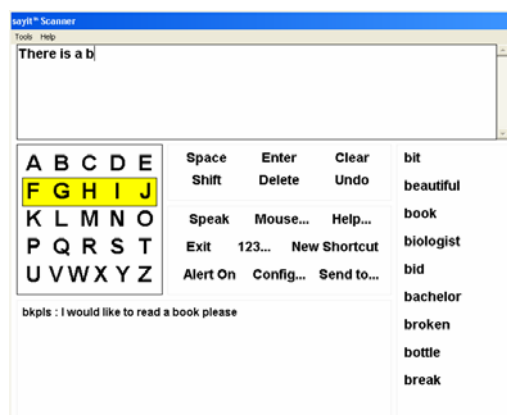


New efficient scan technique

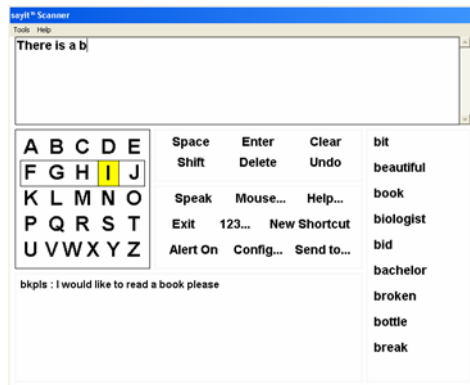
We have redesigned the scanning approach utilised by Scanner to make it simpler and faster to use. Actions are grouped by function. The groups of actions are highlighted in turn, to select a group of actions simply trigger your input device.



Scanner will then highlight each row of actions, to select a row simply trigger your input device again.



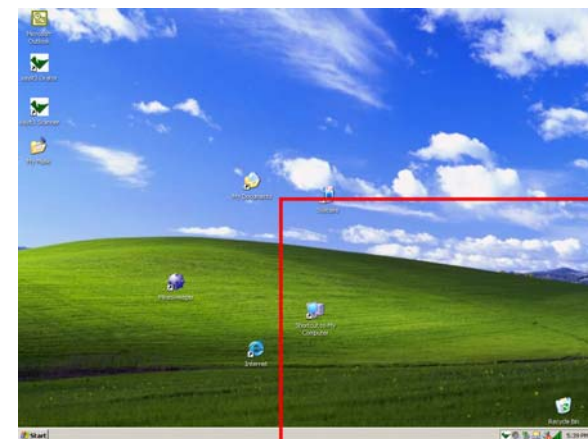
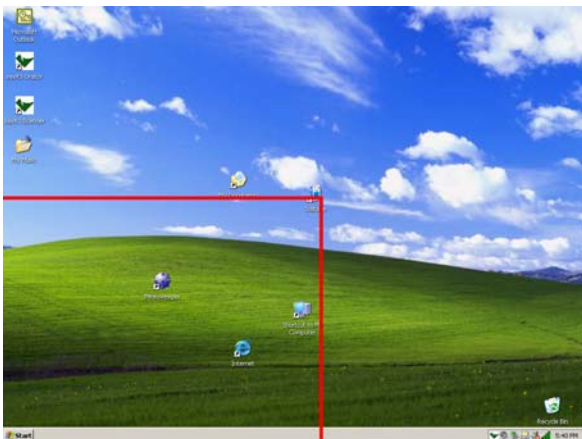
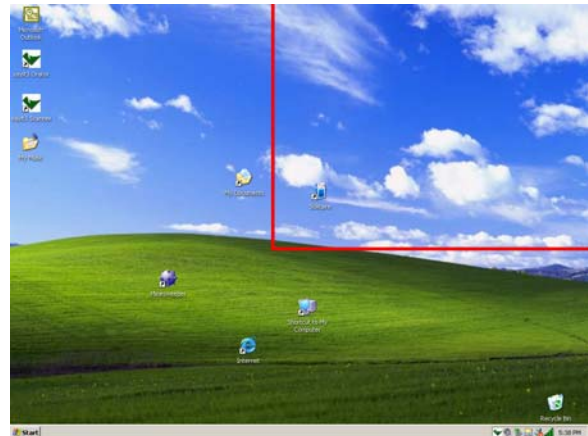
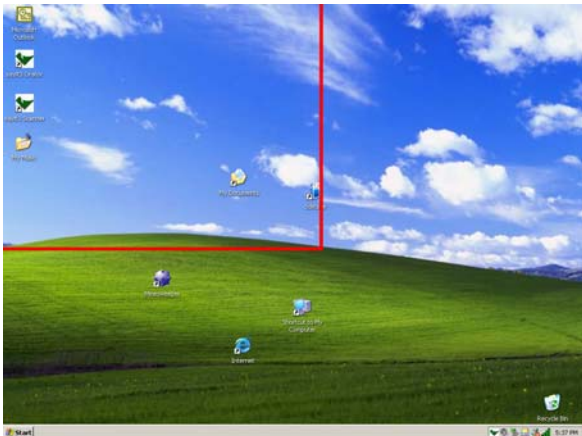
Next Scanner highlights each individual action (a letter, space, clear, exit, shortcut, vocabulary match), to select your desired action trigger your input device again. Scanner will then perform that action.



If you accidentally trigger your input device at the wrong time you don't have to wait long for Scanner to return to the group scan level. Simply wait for Scanner to highlight through each row or action twice and it will return to group scan level if no action is fired.

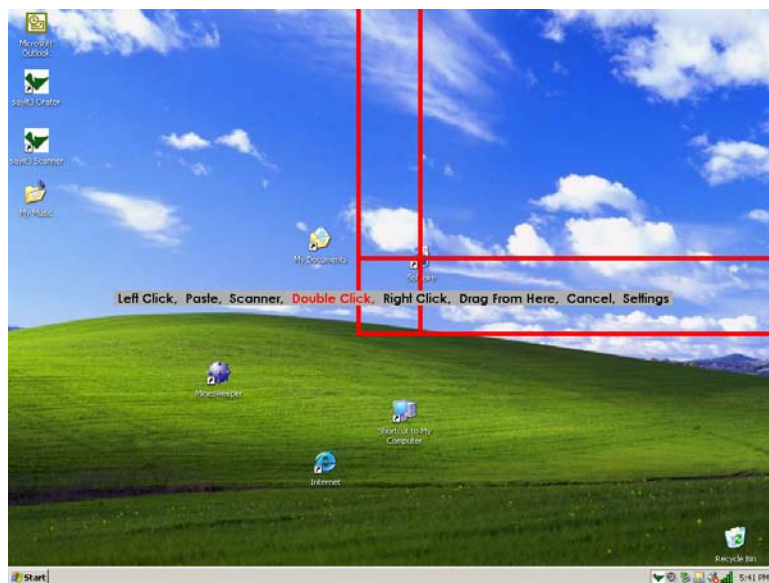
Improved mouse control technique

We have improved the way that sayit Mouse controls your mouse cursor. Previously Mouse was controlled by a simple crosshair, this technique remains but we have vastly decreased the amount of screen area the crosshair needs to cover. Mouse divides the screen into four areas all slightly larger than a quarter of the screen.



When the red box highlights the quarter where you'd like to move the cursor, trigger your input device. Mouse will move a horizontal line up and down in that quadrant, when the line

intersects the point trigger your input device again. Mouse will now move a vertical line left and right across the quadrant, when the line intersects the area you want to click in, trigger your input device. The mouse cursor is moved to this point and you can now choose an action to perform from the sayit Mouse menu.



This quadrant scanning technique vastly decreases the time taken to move the mouse cursor around the screen.

Three input methods

Scanner now allows three different methods of input

- ◆ The traditional *scan and click* mode where items are highlighted and selected by triggering an input device;
- ◆ *Point and click mode* where the mouse is used to select items directly in the Scanner window;
- ◆ *Keyboard input* where the user can type their text directly into the Scanner narration window.

Switching from one mode to the other is simple and can be done via the settings or configuration screens.

Point and click mode

A users' mobility can differ from day to day. As such we have incorporated a *point and click* mode into sayit Scanner. In point and click mode the user controls the mouse cursor and clicks on the various components of the Scanner window to perform actions.

Keyboard enablement

Scanner now recognises the keyboard. This means that if a user has enough control to type they can enter text directly into the Scanner window and still get the opportunity to use the shortcut matches and predicted words. The keyboard is recognised in both *scan and click* mode and *point and click* mode. Combining the keyboard recognition feature with *point and click* mode gives the user a powerful, quick way to generate text.

Device compatibility

sayit Scanner and Mouse are compatible with a range of devices some of which require minimal movement. sayit works with mind, brain and muscle impulse control switches, eye tracking switches and head tracking switches. In fact if you have a particular input device already sayit probably works with it! To view a sample of the kinds of devices that Scanner and Mouse work with visit here http://www.sayit.com.au/input_devices.php

Improved send to functionality

Once again due to excellent feedback we have improved the way that sayit handles its 'send to' *email*, *browser* and *word* capabilities.

Increased vocabulary

sayit now comes with a starting vocabulary of over 33,000 words. These are words that are found in all of the twelve most common dictionaries.

Smart word completion

By leveraging its word prediction technology based on the expanded 30,000 word vocabulary sayit now has smarter word completion.

Learning capability

sayit has an inbuilt learning capacity. As you use sayit, it learns words that it doesn't already know. sayit monitors your word and shortcut usage and automatically suggests those that are most frequently used – these will appear higher in the vocab or shortcut lists. This feature is operational for vocabulary, shortcut and word prediction features of sayit.

Extra shortcut options

The redesign of the Scanner screen layout has allowed extra shortcut options to be displayed. This means that you can see more of your stored phrases at any given time, again improving the time taken to produce text.

Extra vocabulary match options

The redesign of the Scanner screen layout has allowed extra vocabulary options to be displayed. This means that you can see more predicted words at any given time, this decreases the time taken to produce text.

High quality voices

The voices sayit uses for speaking are some of the most advanced in the field of voice generation. sayit voices are configurable between sex, nationality and speed. You can even install your own voices and use them with sayit. sayit will recognise any SAPI 5 compliant voice.

Improved stability

Thanks to the excellent feedback provided by users, carers and associations we have been able to ensure that this version of sayit is the most robust to date.